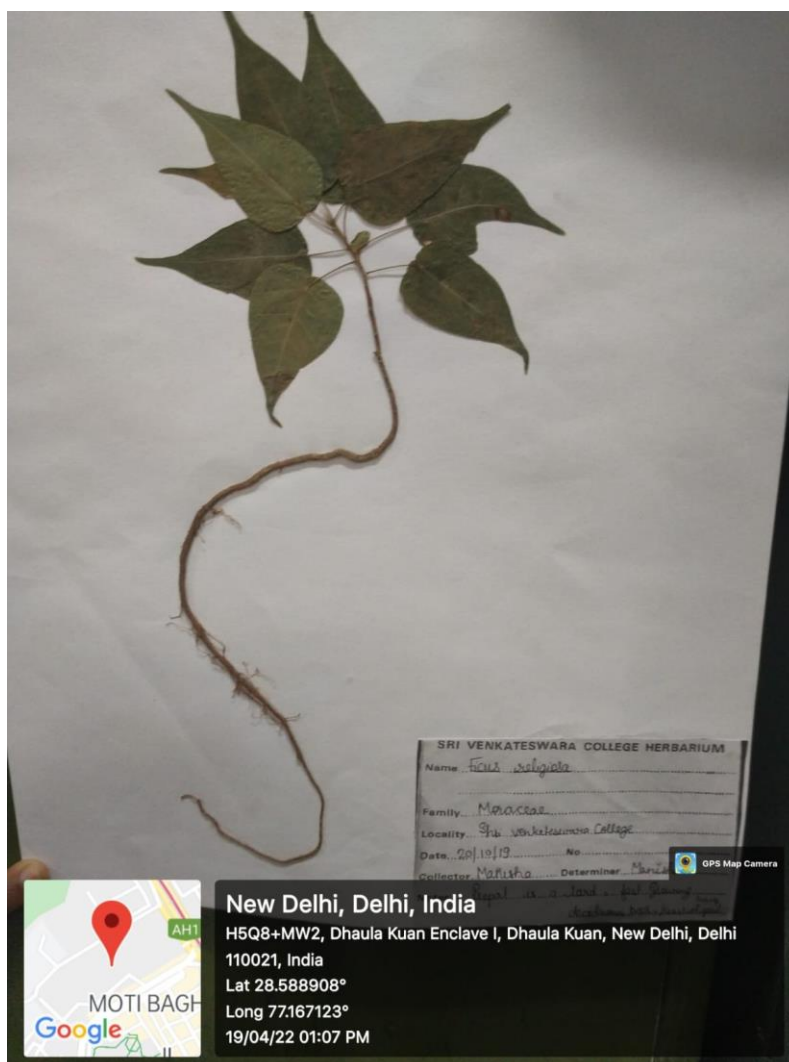


# *Hibiscus rosa-sinensis*



**Common name:** China rose or hibiscus

**Scientific name:** *Hibiscus rosa-sinensis*

**Family:** Malvaceae

**Important part used:** Flower, leaves and roots

*H. rosa-sinensis* is a bushy, evergreen shrub or small tree growing 2.5–5 m tall with glossy leaves and red flowers in summer and autumn.

**Economic importance:** *Hibiscus* leaves, roots and flowers are used in folk medicine as a diuretic and mild laxative, as well as in treating cancer and cardiac, nerve diseases. It is also used for conditions such as high blood pressure, high cholesterol, increasing the production of breast milk, infections, dandruff etc. Leaves are used as food and flower petals are steeped for tea. Flowers are used in the dye, perfume and oil industries. Cut flowers are used as garden ornamentals